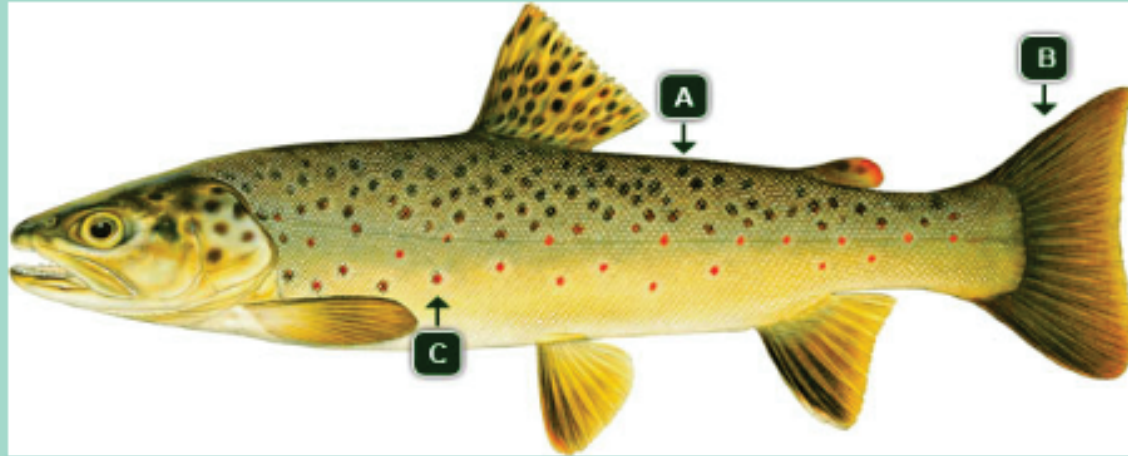


# TROUT IDENTIFICATION & CATCHING LIMITS

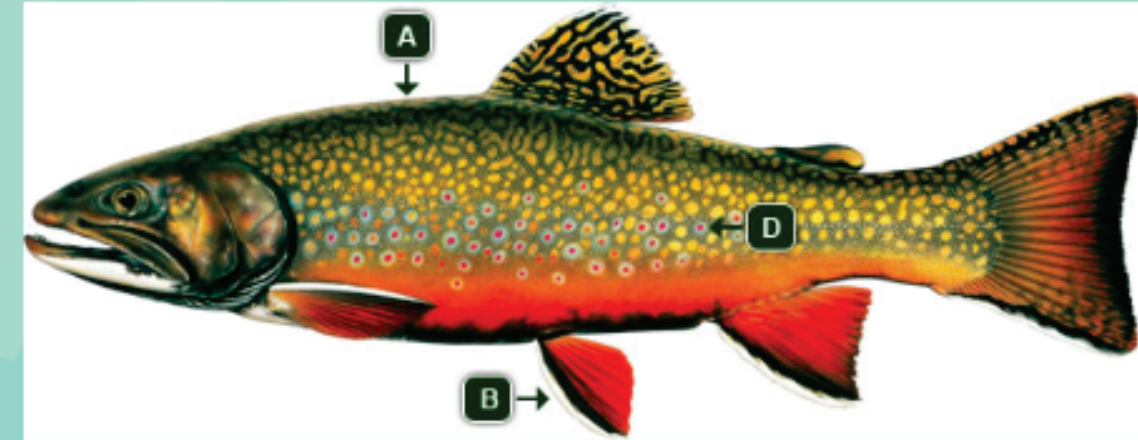


## Brown Trout

- A. Darker black/red spots down the backside
- B. Few/no spots on tail
- C. Red spots with pale halos around them

### **\*Brown Trout Catching Limits\***

ZERO (0) - Catch and release only

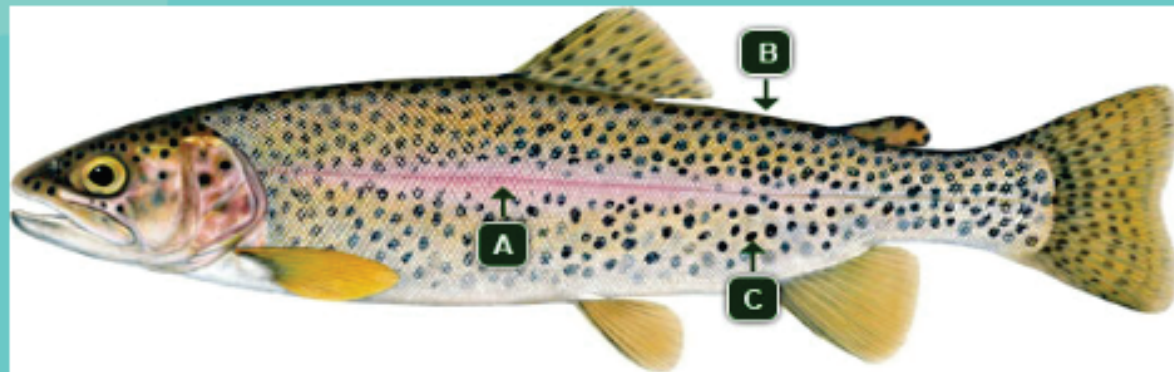


## Brook Trout

- A. Marbled pattern
- B. White leading edge on the pectoral, pelvic, and anal fins
- C. No black or brown spots on the head
- D. Distinctive sprinkling of red dots

### **\*Brook Trout Catching Limits\***

ZERO (0) - Catch and release only



## Rainbow Trout

- A. Reddish Stripe along their sides
- B. Darker on top
- C. Back spots

### **\*Rainbow Trout Catching Limits\***

Three (3) - Per household per day, includes all guest and children catches.

Fifteen (15) - Per household per month, includes all guest and children catches

## FISHING RULES

- 8.1. Members and their guests are permitted to fish and while fishing each member must leave their membership card at the Security Gate, Office or Boathouse.
- 8.2. Fishing limits: Listed on this page
- 8.3. Members must register the number of fish caught including those caught by their guests before leaving the facility. Shore line and access way members must advise the office of the number of fish caught.
- 8.4. Fishing is permitted with reel and rod only. Live bait or nets can not be used to catch fish.
- 8.5. Only single barbless hooks may be used for fishing; maximum two (2) hooks per fishing line.
- 8.6. Cleaning of fish is not permitted on any MLRA property.
- 8.7. Unattended fishing lines are not permitted on any MLRA or privately owned property.
- 8.8. Members and their guests are permitted to access the facility with only one (1) fishing rod per person
- 8.9. Members and their guests are permitted to fish with only one line per person in the water
- 8.10. Catching grass carp is strictly prohibited and must be released immediately
- 8.11. Use of gaffs, gaff hooks or spring loaded hooks is prohibited.
- 8.12. Culling fish is prohibited
- 8.13. Fishing is closed 15 minutes prior to the park closing. Fisherman must report to the guard house prior to leaving the park.